

Canadian

Governor & Control Systems

POWER GENERATION APPLICATION WORKSHEET

The purpose of this document is to provide a framework that can best help you select the generator control that is best suited for your application.



Tel: 416 907 3844

Fax: 416 907 3216

Email: support@canadiancontrols.com

Website: www.canadiancontrols.com

Canadian

Governor & Control Systems

Item 4 - Protection Required for Engine

Over speed _____ Oil pressure _____ Water temperature _____
Oil level _____ other _____

Item 5 - Shutdowns & Alarms

1 Level = Alarm Only _____ 1 Level = Shutdown Only _____
2 Levels = Alarm & Shutdowns _____
Number of other input alarms required (Contact Type) _____

Item 6 - Type of Sensors

1.4-20 _____ 2. Resistive (VDO) _____ 3.RTD PT100/1000 _____ 4.Contact _____
Oil Pressure _____ Gen. Winding Temp _____ Water Temp _____
Oil level _____ Other _____

Item 7 - Type of Communication Required

Mod Bus _____ Profi Bus _____ Can Bus _____ Other _____



Canadian

Governor & Control Systems

Item 8 - PLC Interface Used

YES _____

NO _____

Discuss how the PLC will be interfacing with the Woodward controllers, which may also provide the following functionality:

- Start and stop engine
- Control of Governor and Voltage regulator (See 4 & 5)
- Monitoring and protection of engine and generator
- Load Sharing
- KVAR or P.F. Sharing
- Synchronizing
- Communication via Gateway or Modbus (Local Operator and / or Remote)
- Engine Sequencing
- Protective Relaying (level of protection depends on the control selected)
- Alarm inputs that can be programmed (number depends upon specific control selected)
- Analog outputs that can be programmed (number depends upon specific control selected)
- Relay outputs that can be programmed (number depends upon specific control selected)

Item 9 – Electrical Distribution Information

Size and number of engines _____

Number of Utility Feeds _____

Number of Bus Ties _____

Number of Engines on each Tie _____

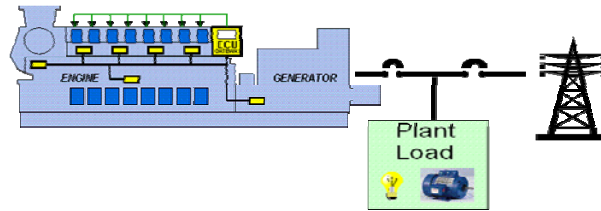
Is there a group beaker? _____



Canadian

Governor & Control Systems

Please use the space provided below to draw a single line diagram or submit a separate drawing with application sheets describing the feeder and generator arrangement.



A large empty rectangular box provided for drawing a single line diagram or submitting application sheets.